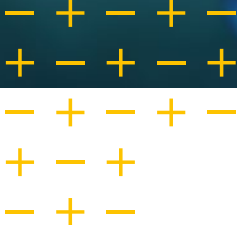




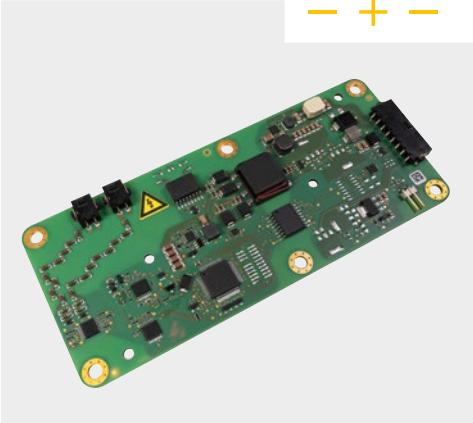
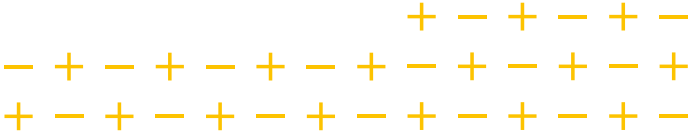
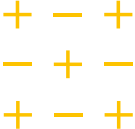
# ISOMETER<sup>®</sup> iso175

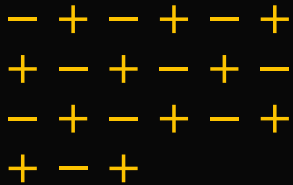
Reliable monitoring of unearthed drive systems



The ISOMETER<sup>®</sup> iso175 reliably monitors unearthed drive systems in hybrid, fuel cell and electric vehicles.

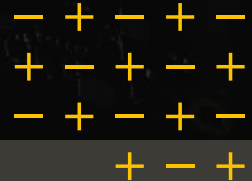
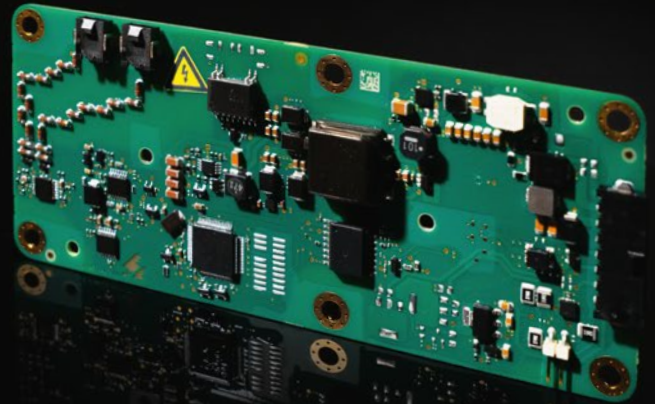
With patented measurement technology and simple integration via CAN interface, it ensures maximum safety and efficiency - even with voltage-free high-voltage systems and high system leakage capacitances.





## Features

- Insulation measurement even when the state of the HV vehicle electrical system
- Maximum system leakage capacitance up to 10  $\mu\text{F}$
- Device disconnection via earth switch
- Numerous parameters, user adjustments and clear alarm messages available via CAN interface
- System adaptation possible through various profiles (e.g. quick start with low capacity / high capacity capacity), disturbed
- Detection of insulation faults on the AC side from the DC link possible
- All outputs short-circuit proof
- HV connection monitoring
- Integrated self-diagnosis
- E1 Qualified



## Bender GmbH & Co. KG

Londorfer Straße 65  
35305 Grünberg  
Germany

Tel.: +49 6401 807-0  
info@bender.de  
www.bender.de